

TRANSLUCENT/BLOCKOUT

CARNABY FABRIC

Applications

Roller Blinds
Roman Shades
Panel Glide

Composition

100% Polyester

Weight

Translucent – 204 ± 30 gms/m²
Blockout – 465 ± 30 gms/m²

Fabric Thickness

Translucent – 0.40mm ± 10mm
Blockout – 0.70mm ± 10mm

Roll Width

2.8m

Privacy Factor

Translucent – Mid-High
Blockout – High

Colour Fastness

6-7 Blue Scale

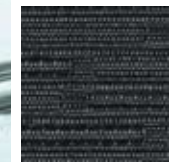
10 matching Translucent
and Blockout Colours

Colours MULTIVISION® Concept

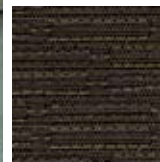
AUSTRALIAN MADE



Midnight



Soot



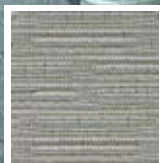
Mink



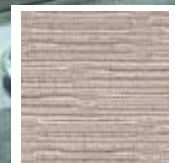
Cocoa



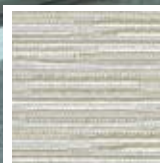
Fog



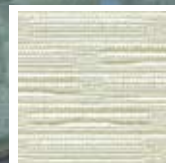
Smoke



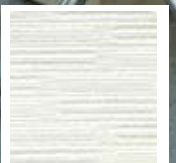
Dove



Pearl



Haze



Blanc

Product: Carnaby Translucent Fabric Colour: Midnight

Note: Colours are as accurate as the printing process allows



HunterDouglasCommercial

WINDOW COVERINGS

Carnaby Translucent/Blockout Fabrics

features and benefits

100% Polyester

10 Colours

Modern colour range designed to suit most Australian interiors.

UV Resistant

All colours meet Australian Standards for colour fastness to resist fading.

MULTIVISION® Concept

MULTIVISION® is a group of fabrics that are perceived to be the same colour tone, but have different opacities. A number of Carnaby Fabric colours have been selected for the MULTIVISION® Concept. For more information refer to the Hunter Douglas Commercial MULTIVISION® Brochure.

Sanitized® Antimicrobial Protection

Treated with Sanitized® Antimicrobial Protection which effectively reduces the development of bacteria, odour, fungi and dust mites.

DURAGUARD® Fabric Protector

Treated with DURAGUARD® Fabric Protector. DURAGUARD® Fabric Protector effectively repels most stain causing agents with its proven, water based, fluorochemical, formula. This fabric protection is totally invisible and has high levels of stain repellence. It makes cleaning and maintaining the fabric much easier.

Solar Optical Properties and COMFORT RATING# Guide

COLOUR	Ts	Rs	As	Tl	Rl	Al	Tuv	Sc	Heat Protection	Insulation	Shade Factor	Glare Reduction	UV Protection
Carnaby Translucent Pearl	36	50	14	34	42	24	16	0.50	◆◆◆◆	◆◆	◆◆	◆	◆
Carnaby Translucent Midnight	18	23	59	1	2	97	2	0.64	◆◆◆◆	◆◆	◆◆◆◆◆◆	◆◆◆◆◆◆	◆◆◆◆◆◆
Carnaby Translucent Cocoa	17	22	61	5	5	90	2	0.64	◆◆◆	◆◆	◆◆◆◆◆◆	◆◆◆◆◆◆	◆◆◆◆◆◆
Carnaby Blockout Midnight	0	17	83	0	4	96	0	0.61	◆◆◆	◆◆	blockout	◆◆◆◆◆◆	◆◆◆◆◆◆
Carnaby Blockout Cocoa	0	16	84	0	5	95	0	0.64	◆◆◆	◆◆	blockout	◆◆◆◆◆◆	◆◆◆◆◆◆

Solar Optical Properties Guide

- Ts - Heat Transmittance (%)
- Rs - Heat Reflectance (%)
- As - Heat Absorbance (%)
- Tl - Light Transmittance (%)
- Rl - Light Reflectance (%)
- Al - Light Absorbance (%)
- Tuv - Ultraviolet Transmittance (%)
- Sc - Shading Coefficient

COMFORT RATING# Guide

- uuuuu Highest level of protection/performance
- uuuu High level of protection/performance
- uuu Medium level of protection/performance
- uu Low level of protection/performance
- u No protection

COMFORT RATING# Guide has been devised by Hunter Douglas Limited with the assistance of Canesis Pty Ltd - an Independent Australian Fibre and Textile Research and Development Company.



Heat Protection



Insulation



Glare Reduction



UV Protection



Shade Factor

Fire Retardancy Information

*1 Complies with the General Requirements of the Building Code of Australia for Fire Hazard Properties of materials in Buildings.

*2 Not suitable for use in parts of buildings with Special Requirements, i.e fire isolated exits, public corridors leading to a fire isolated stairway, passageway or ramp; a patient care area of health care buildings; and in a public assembly building (e.g. theatre or hall) not protected with a sprinkler system.

	Translucent*1	
Ignitability Index [Range 0-20]	0	Heat Evolved Index [Range 0-10] 0
Spread of Flame Index [Range 0-10]	0	Smoke Developed Index [Range 0-10] 0-1
	Blockout*1 and *2	
Ignitability Index [Range 0-20]	13	Heat Evolved Index [Range 0-10] 2
Spread of Flame Index [Range 0-10]	0	Smoke Developed Index [Range 0-10] 7